

Bucher-Guyer AG
Municipal Vehicles
Murzlenstrasse 80
CH-8166 Niederweningen
Phone +41 44 857 22 11
Fax +41 44 857 24 10
info@bucherschoerling.ch

Bucher Schörling GmbH
Schörlingstrasse 3
DE-30453 Hannover
Phone +49 511 214 90
Fax +49 511 210 19 30
info@bucherschoerling.de

Bucher Schörling Italia S.p.A.
Zona Industriale
IT-66030 Arielli (CH)
Phone +39 0871 938 21
Fax +39 0871 938 737
info@bucherschoerling.it

Bucher Schörling Korea Ltd.
Shiwha Industrial Complex
3Ma 819Ho, Chungwang-Dong
Shiheung-City, Kyunggi-Do
Korea 429-450
Phone +82 31 498 89 61-3
Fax +82 31 498 89 85
info@bucherschoerling.co.kr

SIA Bucher Schoerling Baltic
Kustes dambis 28
LV-3600 Ventpils
Phone +371 366 10 50
Fax +371 366 10 51
info@bucherschoerling.lv

Bucher-Guyer AG
Moscow Representation
Olympiyskiy prospect 16
Business center "Olympic"
Office 9
RU-129010 Moscow
Phone +7 095 974 12 66
Fax +7 095 974 12 69
info@bucherschoerling.ru

Giletta SpA
Via A. De Gasperi, 1
IT-12036 Revello
Phone +39 0175 258 800
Fax +39 0175 258 825
com@giletta.com

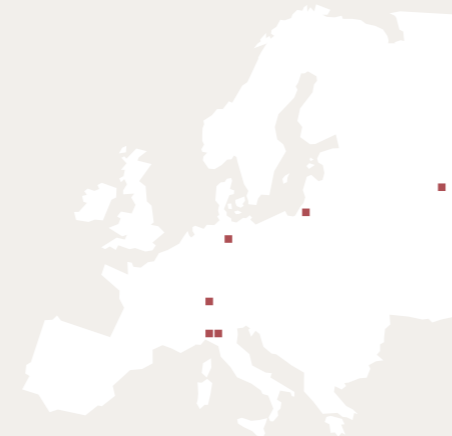
www.bucherschoerling.com

04/2005



Our product range

The current international sites of Bucher Schörling



**A clean sweep
for a safe environment**



Maximise your performance, operator comfort, operational efficiency and cost effectiveness

Bucher Schörling is a renowned world leader in manufacturing municipal vehicles and airport maintenance equipment for cleaning and for clearing snow from public and private traffic areas – all with cutting-edge technology guaranteeing superior performance, operator comfort, operational efficiency, and cost effectiveness.



Agile compact sweepers

With its narrow width, the CitySpider is ideal for navigating the tightest of alleyways and most confined spaces. The CityCat 2020, featuring articulated steering, and the CityCat 5000, with four-wheel steering, deliver maximum directional stability and superb manoeuvrability. These qualities, coupled with the superior sweeping power of the front brushes, ensure efficient, effective and precise cleaning in town and city centres, through pedestrian areas, at bus stops, along small passageways or in recreation areas. A cab providing all-round visibility and the convenient central PSS (programmable sweeping system) control panel, offer the ultimate in operator comfort and ease of operation. State-of-the-art engines meeting the latest exhaust emission standards, outstanding suction performance and durable aluminium and stainless steel components give you a machine that is not only built to last but also protects the environment from dust and noise.



CitySpider



CityCat 2020



CityCat 5000



Dependable truck-mounted sweepers

Recognised as the world standard for this class of cleaning vehicle, the wide range of truck-mounted sweepers delivers extremely strong suction and cleaning performance. Robust construction using premium quality materials ensures a long service life and maximum operational efficiency, cost effectiveness and uptime. Extremely easy to use and maintain, Bucher Schörling vehicles pass the test in every situation. Impressively low noise levels are another feature making them especially suited to urban cleaning.



UniFant 40/50/60



EuroFant 50



CityFant 60



OptiFant 70



OmniFant 80



Outstanding airport cleaning equipment

Powerful airport sweepers High-performance runway and snow sweepers. In operation all over the world, our runway sweepers are built for cleaning all airport service areas at high speeds of up to 40 km/h. Achieving outstanding sweeping and clearing capacities, they perform their tasks in a reliable way, using either a suction device to pick up loose debris, e.g. sand, gravel, metal parts and aircraft de-icing fluid or a blowing device to clear grass or snow etc. Runway sweepers can also be used as a prime mover for snow sweepers during winter service. Snow sweepers are available as tow-behind models or permanently mounted on a modified truck chassis. A sweeping width of more than 5 m can be achieved.

Robust snow blowers Developed on the basis of years of experience, our Rolba range offers unbeatable quality and performance with snow clearing capacities of up to 8 000 t/h and beyond. High engine power, infinitely variable hydrostatic transmission and blower drives, selectable steering modes and an impressive casting distance all guarantee easy handling and efficient snow removal. Depending on the model, they are ideal for clearing narrow streets, mountain passes and airport service areas.



STKF 9500



P 21/S



P 21C



Rolba 600



Rolba 1500/3000



Rolba 5000



Reliable spreaders and ploughs

Different spreaders and ploughs are available to suit all types of road and airport maintenance needs. Designed for distributing dry and/or liquid materials, the spreaders with hopper capacities from 0.8 m³ to 11 m³ feature premium quality materials and are certified for precision spreading. All feeding systems, belt, auger or chain, are equipped with a hydraulic roller breaker. A wide range of attachments and accessories allow these machines to perform in all conditions. Standard and optional electronic components, such as GPS tracking, enhance their ease of operation in professional applications.



KA-Serie



PS/KS-Serie



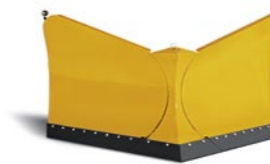
HF-Serie



MA-Serie



MN-Serie



VA-Serie



Multi-purpose municipal and utility vehicles

Our versatile, multi-purpose utility vehicles offer outstanding quality, manoeuvrability, compact overall dimensions and a long service life. Customised with a large variety of optional equipment and superstructures, they can be fitted out for a wide range of uses in winter maintenance, materials transport, crane and lifting applications, and fire fighting. Built for a total weight of up to 6.5 t, the vehicles come with a choice of three drive options (4x2, selectable 4x4 or full-time all-wheel drive). Designed for ride quality, economy and ergonomics, their safe on-road handling, excellent all-round visibility and fatigue-free operation create a comfortable working environment.



BU 100



BU 150



BU 200

Professional service At Bucher Schörling, service begins at the drawing board when we design vehicles tailored to accommodate our customers' requirements to produce bespoke solutions. We are renowned for our sound, competent advice and reliable service, provided by knowledgeable and well-trained staff coupled with efficient spare parts centres, always assuring the fastest delivery and long-term supply guarantees.

Certified quality Committed to quality, Bucher Schörling strives to ensure continuous machine uptime, long life and low maintenance. Our competence centres are fully ISO 9001:2000 certified. Bucher Schörling manufactures vehicles that provide maximum customer satisfaction whilst delivering the best value for money with the lowest total cost of ownership.

Genuine customer care For Bucher Schörling, customer care starts before we begin to develop new municipal vehicles and airport maintenance equipment. Engaging in dialogue with municipal and private customers and learning from our after-sales feedback, we pinpoint potential for optimisation and then engineer forward-looking solutions to meet our customers' high expectations. Development teams dedicated to this task are available at our competence centres in Switzerland, Germany, Italy and Korea.

Bucher: a global group building innovative machinery and vehicles

Bucher Schörling is part of "Bucher Municipal", one of the five divisions making up the Bucher Group. Founded in 1807, the Bucher Group has developed a range of products and acquired companies over the last decades to build up the Bucher Municipal Division into a global business dedicated to municipal vehicles and airport maintenance. Rolba Kommunaltechnik AG, a firm specialising in compact sweepers and snow removal equipment, joined Bucher Municipal in 1991, followed by Schörling GmbH in 1994. In 2002, Bucher Municipal acquired a significant stake in Giletta SpA, a company primarily engaged in manufacturing material spreaders. These operations rounded off the Bucher Municipal product portfolio, previously focused on compact sweepers and municipal vehicles.

The Bucher Group encompasses Bucher Municipal and the following divisions:

Kuhn Group Agricultural machinery for fodder harvesting, feed processing, tilling, seeding and spraying.

Bucher Process Equipment for wine and fruit juice production: fruit receiving lines, mills, presses, filtration and reverse osmosis systems, and vacuum belt dryers.

Bucher Hydraulics Customised hydraulic drive and control systems for mobile and industrial applications.

Emhart Glass Glass forming equipment, inspection systems, components, spare parts and support services for the container glass industry.